

SAY WHAT?

IN JUST ONE DAY,

I can learn how to safely and properly assemble a fluid system?

YES!

The school year might be ending, but now is the ideal time for Maintenance Technicians to hone their skills by enrolling in the renowned Swagelok Tube Fitting Installation & Tube Bending Safety Essentials class.



Simply email, call, or text today for complete course details, including:

- Register four or more students, and we can bring our instruction to your location
- Highly hands-on; you will practice, practice, practice
- We supply ALL training materials; you just need to show up where/when
- Comes with a complete money-back guarantee
- You will master how to select, handle, prepare, cut, and debur tubing
- You will make bends of 45°, 90°, and 180°, plus offsets
- Start/stop times are flexible depending on your schedule
- Get Continuing Education credits
- Receive two Swagelok certifications for just one day of training
- We even bring lunch

Email: [rudy.frank@swagelok.com](mailto:rudy.frank@swagelok.com)

Text/Call: 412.439.1706

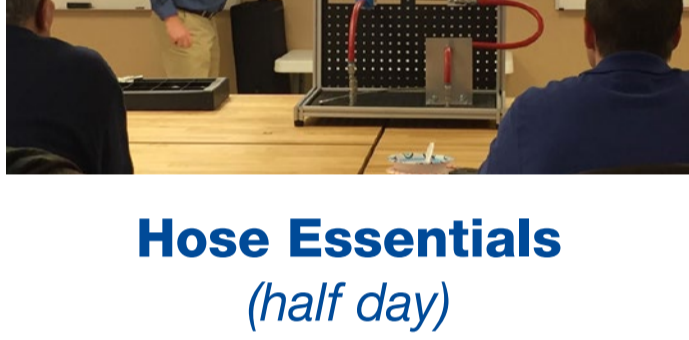
In addition, we offer a wide array of other Swagelok class titles:



**Advanced Tube Bending**  
(2.5, 3, or 3.5 day lengths)



**Steam Essentials**  
(1, 2, or 3 day lengths)



**Hose Essentials**  
(half day)



**Valve Basics**  
(half day)



**Orbital Welding**  
(5 days)



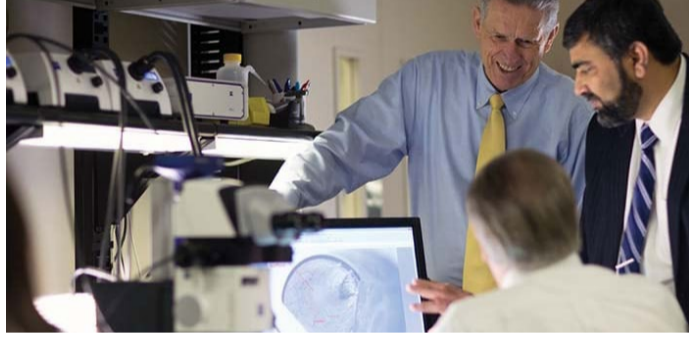
**Process Analyzer Sampling Systems** (5 days)



**Sampling System Maintenance**  
(2 days)



**Analyzer Technician Essentials**  
(2 days)



**Advanced Materials**  
(1 day)

DON'T DELAY!

Sign up for your training course(s) today!

Email: [rudy.frank@swagelok.com](mailto:rudy.frank@swagelok.com)

Text/Call: 412.439.1706

Visit: [pittsburgh.swagelok.com/en/services/training](http://pittsburgh.swagelok.com/en/services/training)

Put our team alongside yours



WE DELIVER DIFFERENCE-MAKING SOLUTIONS:

Products | Strategic Support Services | Application Know-How



The Brand. The Inventory. The Expertise.

WE'RE YOUR SWAGELOK FLUID-SYSTEM SOLUTIONS PROVIDER

 <b>Industry-Best Componentry</b>	 <b>Masterful Custom Fabrication</b>	 <b>Expert Safety Training</b>	 <b>Extensive Energy Evaluations</b>
 <b>Unparalleled Application Knowledge</b>	 <b>Comprehensive Hose Advisories</b>	 <b>Proven Inventory Management Support</b>	 <b>Genuine Swagelok Tool Rentals</b>



WE CAN HELP YOU SAVE TIME, MONEY, AND WORRY:

Share

Share

Forward

Swagelok Pittsburgh | Tri-State Area  
49 Meade Avenue, Pittsburgh, PA 15202  
412.761.3212

All service marks and trademarks shown are owned and registered by Swagelok Company. © 2026 Swagelok Company. [www.swagelok.com](http://www.swagelok.com)

You are receiving this email as a valued contact of Swagelok Pittsburgh | Tri-State Area.