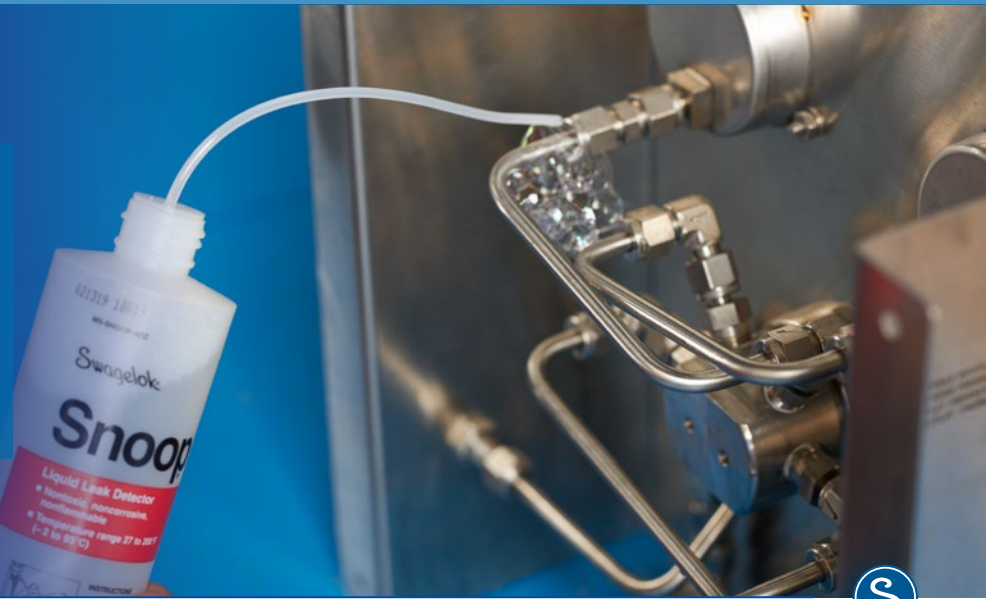


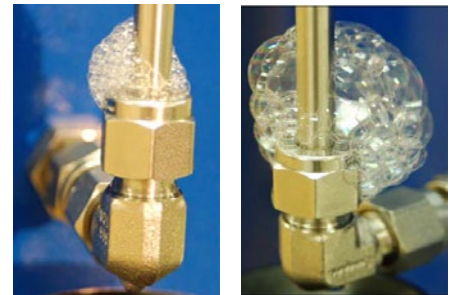
## A LITTLE COULD MEAN A LOT



Line leaks, no matter how small or the media, often lead to significant downtime, high associated labor/maintenance costs, and, most critically, potential safety risks

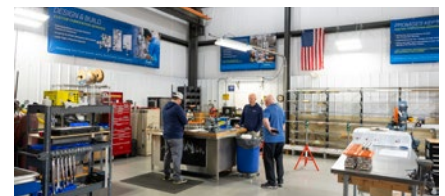
### **The Negative: Energy Loss**

- Wastes millions of gallons of hydraulic fluid yearly worldwide
- Leads to expensive equipment damage such as premature wear and even failure
- Slashes production output due to process repair shutdowns
- Leads to off-spec product due to improper instrument calibration/operation
- Creates an unsafe worker environment: slips, falls, fugitive emissions...
- Creates potential for major fines due to noncompliance of safety regulations
- Tiny leaks can lead to large leaks, forcing total system shutdowns for inspections

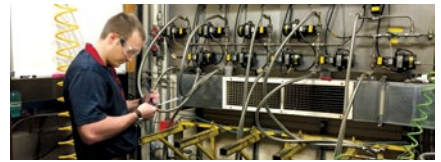


### **The Positive: Swagelok Cost-Effective Solutions**

- Our premium-quality **Componentry** is globally renowned for unparalleled performance in even the most challenging Oil and Gas, Chemical, Steel, Clean Energy, Power, General Industrial, and Research-and-Development applications
- Our **Design-and-Build Shop** produces instrumentation panels, sub-assemblies, skids, and enclosures that are leak-tight, tested, inspected, and professionally packaged for simple installation and maintenance



- Our **Customer Safety Training** programs ensure that your technicians – new hires to veterans – know how to safely and properly pull up tube fittings and bend tubing of various lengths and materials
- Our **Energy-Loss Evaluations** provide you a comprehensive snapshot of faulty connections and dangerous leak points in your lines – with expert recommendations on how to quickly remedy the issues that are costing you the most time, money, and worry
- Our **Industrial Hose Advisories** will give you an accurate assessment of current sizing, routing, and storage practices and concerns, plus offer ideal going-forward suggestions on which type of hose to use for which applications
- Our vast **Technical Application Know-How**, through your local Swagelok representative or our inside sales and service team, will help you consider and choose the “right” tool for the job



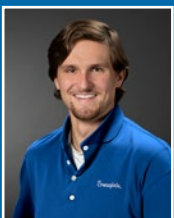
## ***DON'T LET LEAKAGE, OF ANY KIND OR VOLUME, HURT YOUR OVERALL SYSTEM PRODUCTIVITY!***

Our tube fittings, valves, gauges, tubing, hoses, regulators, and other products – and Strategic Support Services – will keep you safe and running, enabling you to get more out the door to outpace heavy production demands.

***Put our team alongside yours***



For complete details on the numerous ways and means Swagelok can significantly boost your safety, productivity, and profitability, contact:



**Tim Davis,**  
Application Engineer

[tim.davis@swagelok.com](mailto:tim.davis@swagelok.com)



**Mikhaila Stang,**  
Application Support Engineer

[mikhaila.stang@swagelok.com](mailto:mikhaila.stang@swagelok.com)

**P: 412.761.3212    W: [pittsburgh.swagelok.com](http://pittsburgh.swagelok.com)**

[SwagelokPittsburgh](https://www.facebook.com/SwagelokPittsburgh) [@swagelokpittsburgh](https://twitter.com/swagelokpittsburgh) [Swagelok-Pittsburgh-Tri-State-Area](https://www.linkedin.com/company/Swagelok-Pittsburgh-Tri-State-Area)

All service marks and trademarks shown are owned and registered by Swagelok Company. © 2026 Swagelok Company. [www.swagelok.com](http://www.swagelok.com)

**Swagelok**

Swagelok Pittsburgh | Tri-State Area