



505 - 6th Street, Suite 200
New Westminster, BC V3L 0E1

Toll Free: 1-866-566-SAFE
Fax: (778) 396 - 2064
www.safetyauthority.ca

TECHNICAL STANDARDS & SAFETY AUTHORITY
14TH FLOOR CENTRE TOWER-3300 BLOOR STREE
TORONTO ON M8X 2X4

Date: September 26, 2015
Account #: 35231
Journal #: 63565
Our File #: 5553434

Attn: TANYA FRANCIS

Re: Application for Design Registration

The design, as detailed in your, TSSA's Service Requestion No. 1710958, for a Fitting is accepted for registration as follows:

Registered To: SWAGELOK COMPANY **CRN:** OC17882.51

Drawing #: Catalog MS-01-98

Conditions Of Registration:

Registration of Special Alloy 50 Series Lift Check Valves. See scope of registration.

This design was registered based on a technical review performed by the province of initial registration in accordance with the Association of Chief Inspectors policy on reciprocal recognition of design review.

Reviewer's Notes:

As required by CSA B51 4.2.1, this registration expires on August 14, 2025. This CRN is valid until the expiry date as long as the Manufacturer maintains a valid quality control program verified by an acceptable third-party agency until that date. Should the certification of the quality control program lapse before the expiry date, this registration shall become void.

Contact me if you have any questions. The invoice for registration will be forwarded under separate cover.

PARM SANDHU
(778) 396-2033
Parm.Sandhu@safetyauthority.ca
Design Administration

cc:

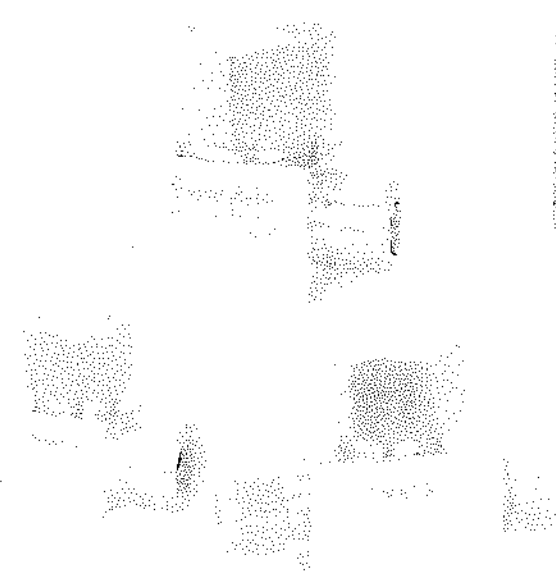
Attachment B: Scope of CRN Registration for Swagelok Special Alloy 50 Series Lift Check Valves (Category C)

This document represents the scope of the Special Alloy 50 Series Lift Check Valves covered by this submission for CRN approval. The Swagelok Special Alloy 50 Series Lift Check Valves were designed and evaluated in accordance with ASME B31.1 for unlisted components and ASME B31.3 for unlisted components.

Summary Table

Product Description or Series	Main Pressure Bearing Component	Main Pressure Bearing Material (Standard)	Port Connections and Sizes	Maximum Rated Pressure		Design Code of Construction
				At ambient temperature	At maximum temperature	
53	Body	Monel Type 400 (UNS N04400)	Swagelok Tube Fitting 1/4", 6MM Female NPT 1/8", 1/4" Tube Socket Weld 1/4"	5,000 psi @ 100 °F	3,960 psi @ 500 °F	ASME B31.1 (Unlisted Components) and ASME B31.3 (Unlisted Components)
56	Body	Monel Type 400 (UNS N04400)	Swagelok Tube Fitting 3/8" Female NPT 1/4" Tube Socket Weld 3/8", 1/2"	5,000 psi @ 100 °F	3,960 psi @ 500 °F	ASME B31.1 (Unlisted Components) and ASME B31.3 (Unlisted Components)
58	Body	Monel Type 400 (UNS N04400)	Swagelok Tube 1/2", 3/4" Female NPT 3/8", 1/2" Tube Socket Weld 1/2"	5,000 psi @ 100 °F	3,960 psi @ 500 °F	ASME B31.1 (Unlisted Components) and ASME B31.3 (Unlisted Components)

Product Illustration



THIS IS PART OF
 CRN DC 17882.51
 For more information, please contact:
 Safety Authority
 6000 14th Street
 Calgary, Alberta T2C 1S7



Quality System

The Swagelok Company quality system complies with the requirements of BS EN ISO 9001:2008. The Swagelok Company maintains British Standard's Institution Certificate of Registration Number FM 01729, which applies to all locations listed on the Certificate. The Special Alloy 50 Series Lift Check Valves are manufactured at a Swagelok Company location in Solon, Ohio.

References

The product catalog does not represent the full scope of registration, but rather details some of the most common options.

- 50 Series Lift Check Valves Catalog MS-01-98.

THIS IS PART OF
CRN OC1788251
Under Product and Manufacturer
Control - Fabrica Mecanica
Safety Program

