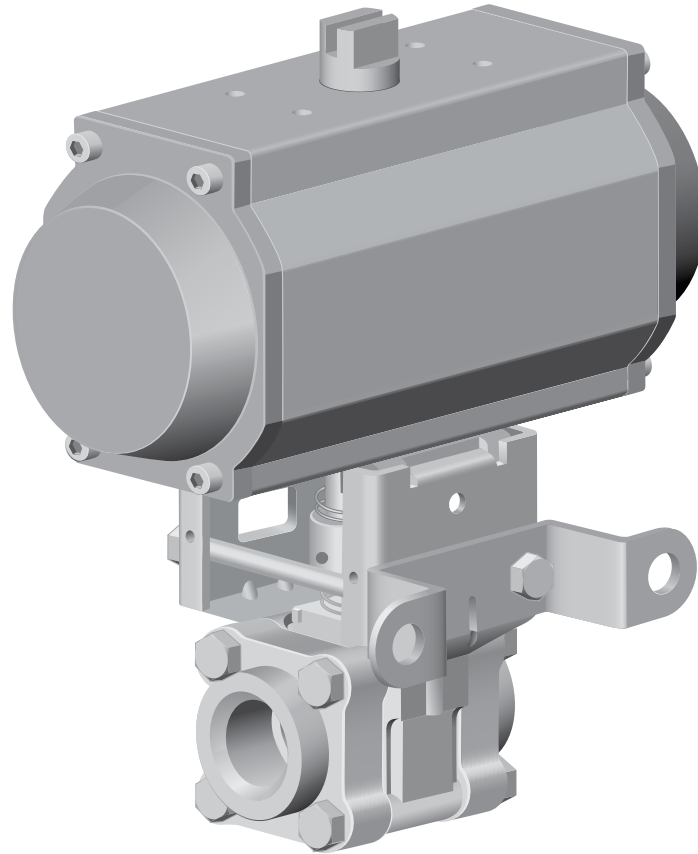
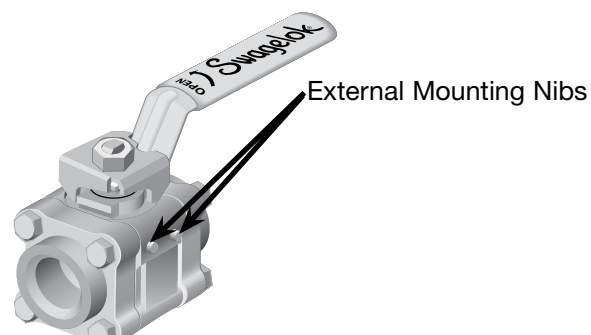


# Mounting Instructions For 3-Piece Namur Style Mounting Bracket To 2-Way 60 Series Valves

Swagelok®

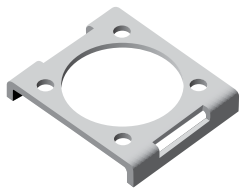


NOTE: These instructions apply only to 60 series ball valves with bodies containing external mounting nibs.

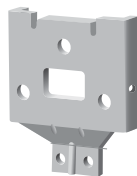


## Mounting Bracket Kit Contents:

Bracket Top Plate (1)



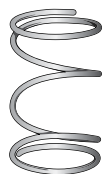
Bracket Side Plate (2)



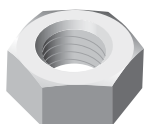
Lock Washer (2)



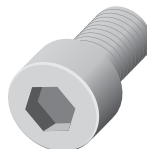
Upper Grounding Spring (1)



Hex Nut (2)



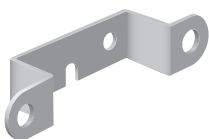
Cap Screw (4)



Hex Bolt (2)



Wall Mount Bracket (1)



Lock tab (1)



Coupling Kit Contents:  
(Ordered Separately)

Coupling (1)



Instruction Sheet (1)



## Tool Requirements:

Hex Key (1)



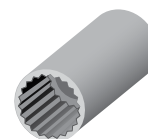
Wrench (1)



Torque Wrench (1)



Socket (1)



Hex Key			Socket and Wrench	
Metric Kits (-M)	Fractional Kits		Metric Kits (-M)	Fractional Kits (-F)
5 mm	3/16 in	F05 Kits	10 mm	7/16 in
6 mm	1/4 in	F07 Kits	13 mm	1/2 in



**WARNING**

Before servicing any installed valve, you must

- depressurize the system
- cycle the valve
- purge the valve



**WARNING**

Residual material may be left in valve and system.

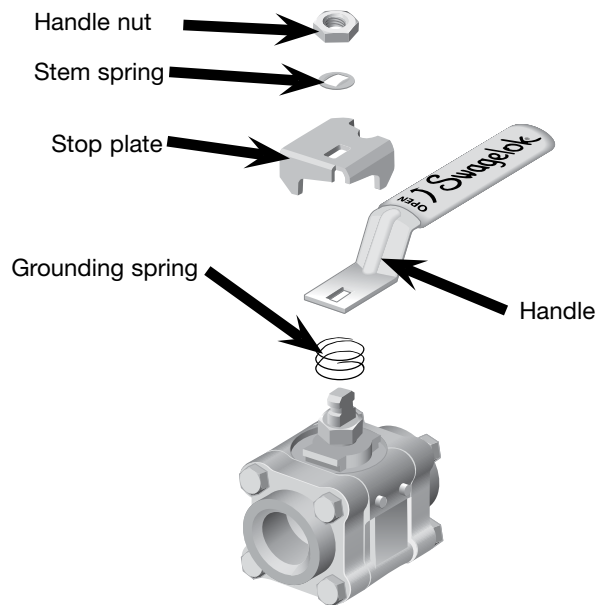


**CAUTION**

Actuated assemblies must be properly aligned and supported. Improper alignment or inadequate support of the actuated assembly may result in leakage or premature valve failure.

**Valve Preparation:**

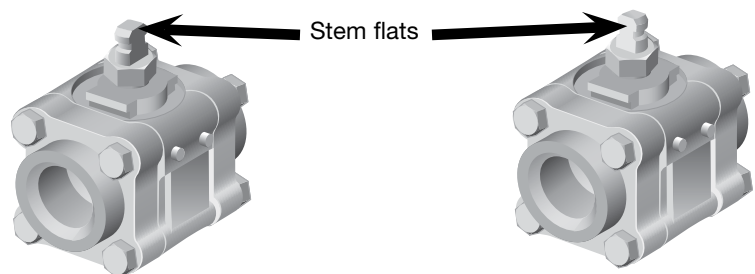
1. Turn the handle to orient the valve in the desired position (either “open” or “closed”). This position will determine the initial valve/actuator position. Remove handle nut, stem spring, stop plate, grounding spring, and handle from valve.



2. Verify that the orientation of the valve is in the desired position.

Valve In Open Position

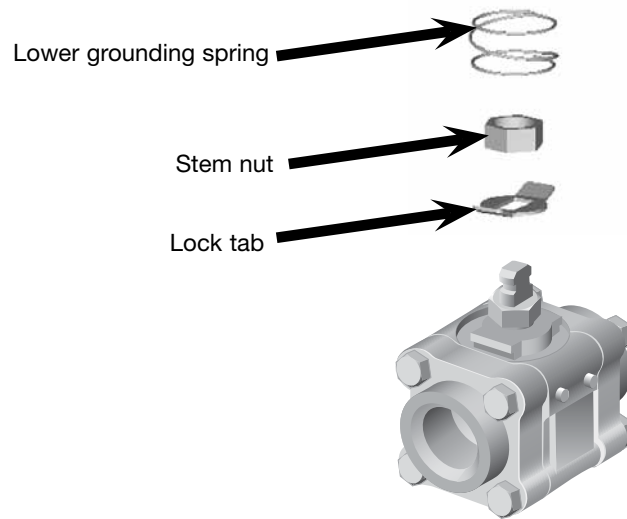
Valve In Closed Position



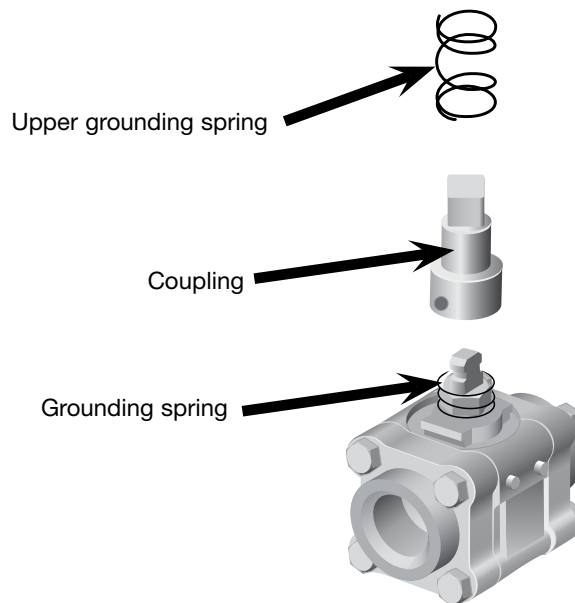
3. Remove the lower stem nut and place the lock tab on the stem.
4. Reinstall the lower stem nut and tighten according to the torque table below. Bend the lock tabs "up" against the stem nut flats. If the tabs do not align with the stem nut, tighten the stem nut until the tabs are aligned, not more than 1/6 turn.

Place the lower grounding spring onto the valve, ensuring it contacts with the valve body.

Series	Torque	
	in.·lb	N·m
62, S62P	25	2.8
63, S63P	50	5.7
A63T, T63M	75	8.5
65, S65P	100	11.3
A65T, T65M	150	17.0
67 and 68, S67P and S68P	150	17.0
A67T, A68T, T67M, and T68M	200	22.6



5. Place the coupling onto the valve stem above the grounding spring supplied with valve. Install the upper grounding spring, supplied with the kit, onto the coupling.

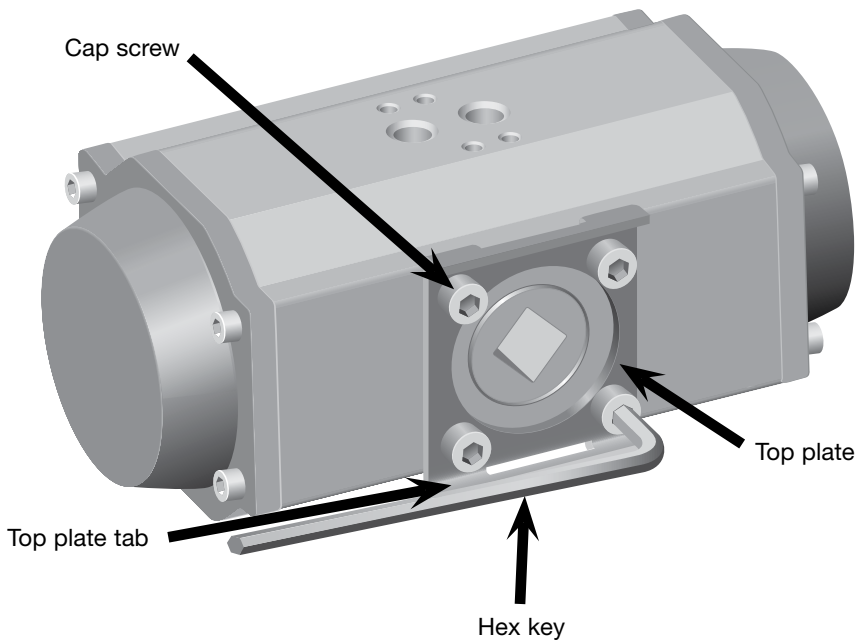


Coupling Style Shown: (DIN 3337 Version, valve open)

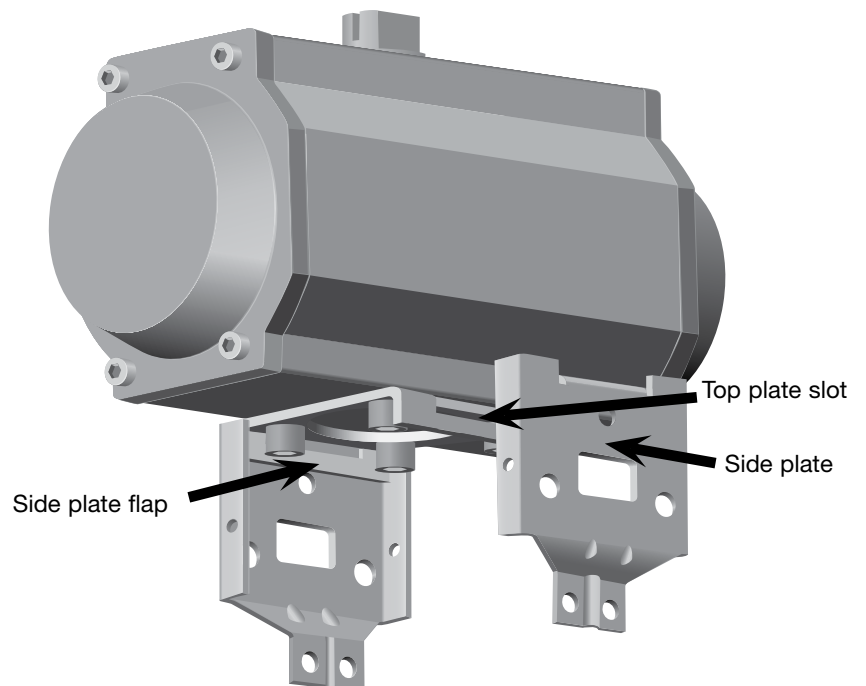
## Actuator Preparation:

6. Attach the bracket top plate to the actuator with the (4) cap screws so that the tabs on the top plate are parallel to the long axis of the actuator. Torque the cap screws as follows:

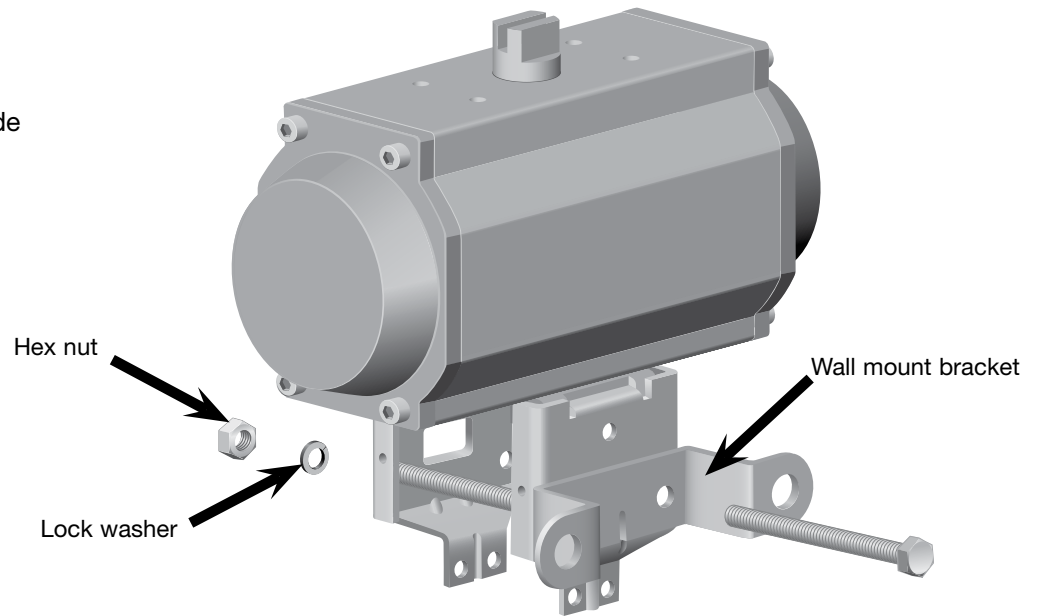
Bracket Kit	Torque	
	in.-lb	N·m
SS-MB-63-F05-M SS-MB-63-F05-F	50	5.7
SS-MB-65-F05-M SS-MB-65-F05-F	50	5.7
SS-MB-65-F07-M SS-MB-65-F07-F	75	8.5
SS-MB-67-F07-M SS-MB-67-F07-F	75	8.5
SS-MB-68-F07-M SS-MB-68-F07-F	75	8.5



7. Assemble the bracket side plates to the bracket top plate by inserting the side plate flaps into the top plate slots.



- Place the wall mount bracket against the bracket side plate. Insert the hex bolts through the holes in the wall mount bracket and then through the bracket side plates. Place one lock washer over each hex bolt and thread a hex nut approximately one turn onto each hex bolt.

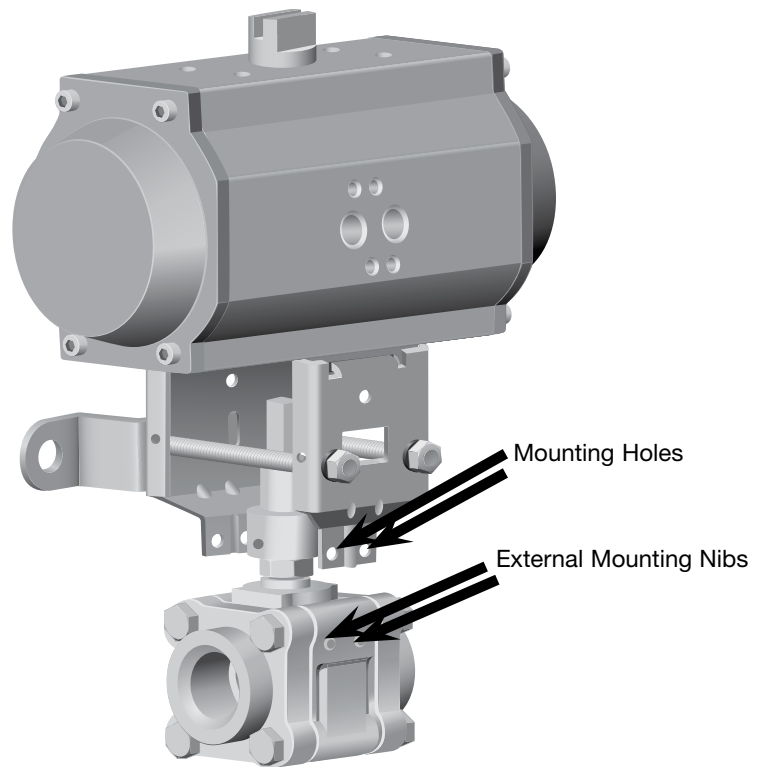


NOTE: Actuators with adjustable shaft travel stops must be adjusted to ensure that the valve is fully open or fully closed when the actuator is in the corresponding position. Contact the actuator manufacturer for the proper procedure for travel stop adjustment.

## Mounting Instructions:

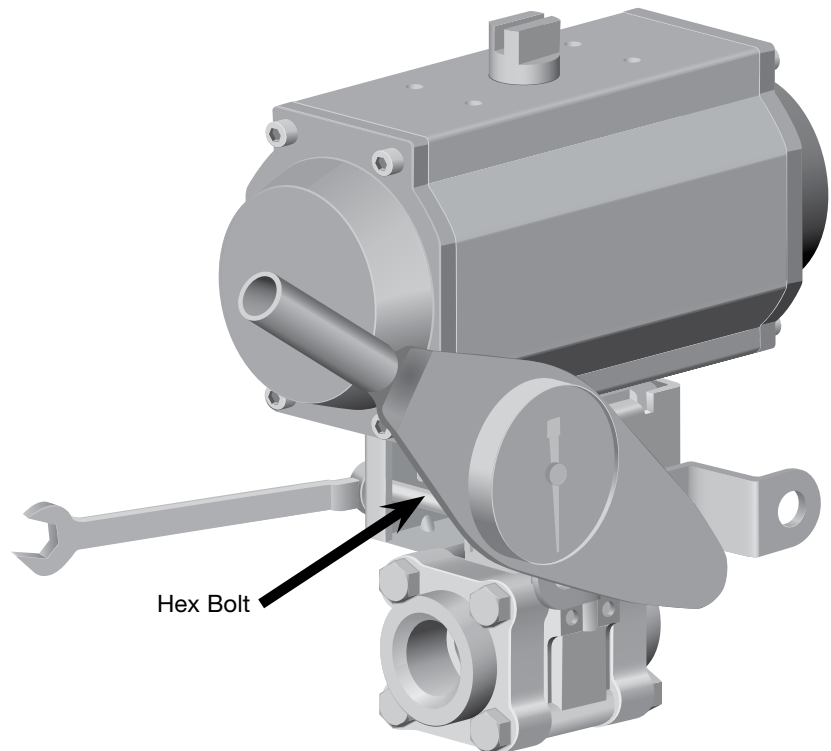
- Place actuator/bracket assembly over valve/coupling assembly, engaging the coupling with the actuator. Align bracket side plates so the mounting holes fit over the external mounting nibs on the valve body. Tighten the hex nuts to “finger-tight”.

NOTE: Rotation of the actuator shaft or the valve/coupling position should not be required to achieve proper alignment.



- While holding the hex bolt head, torque each hex nut as follows:

Bracket Kit	Torque	
	in.·lb	N·m
SS-MB-63-F05-M SS-MB-63-F05-F	25	2.8
SS-MB-65-F05-M SS-MB-65-F05-F	30	3.4
SS-MB-65-F07-M SS-MB-65-F07-F	45	5.1
SS-MB-67-F07-M SS-MB-67-F07-F	55	6.2
SS-MB-68-F07-M SS-MB-68-F07-F	65	7.3



- Apply a minimum actuation pressure of 5 bar (75 psig) to the actuator to verify proper actuation.

NOTE: Verify proper adjustment of actuator shaft travel stops.

