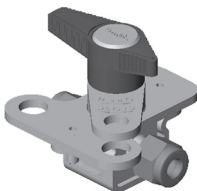


Plug Valve Locking Handle Retrofit Instructions

Kit Contents

Plug/handle subassembly with lock lever
Lock plate
Mounting bracket
Snap ring
2 screws



⚠ Warning: Before servicing any installed valve you must:

- depressurize system
- cycle valve

⚠ Warning: Residual material may be left in the valve and system.

1. Remove **snap ring** from bottom of plug using snap ring pliers. Remove **plug/handle subassembly** by lifting straight up on handle.
2. Place **mounting bracket** around the **valve body** then place **lock plate** over **mounting bracket** with the **padlock holes** on the same side of valve body as the **flow arrow**. Make sure the large hole in the **lock plate** is aligned with the body bore.
3. Attach **lock plate** to **mounting bracket** using provided **screws**. Make sure the body is oriented as desired, then tighten the screws with a 3/32 hex wrench until tight.
4. Remove protective sleeve from the provided **plug/handle subassembly with lock lever**. Insert the **subassembly** into **valve body** through the hole in the lock plate with the port O-ring facing the **flow arrow** on the outside of the body. Do not slide the port O-ring past the body ports during assembly.
5. Install the provided **snap ring** into groove in the bottom of plug using snap ring pliers.
6. Test valve for proper operation.

