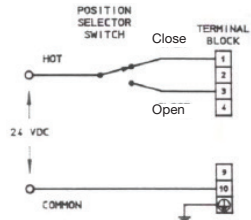


# OPERATING CHARACTERISTICS

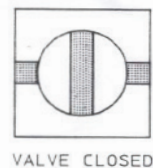
## Valve Stem Position vs. Applied Control Signal

### 2-Way Ball Valves

Control Signal Configuration

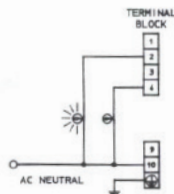


Resulting Valve Stem Position

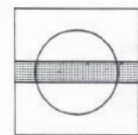
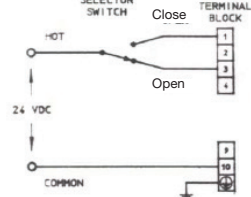


VALVE CLOSED

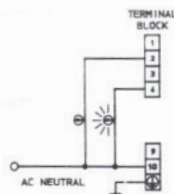
Resulting Lamp Status



Control Signal Configuration

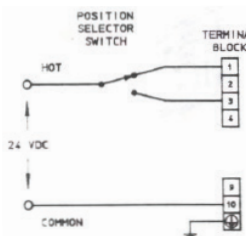


VALVE OPEN

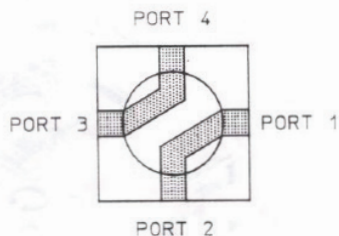


### 4-Way Ball Valves

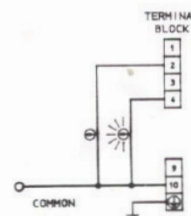
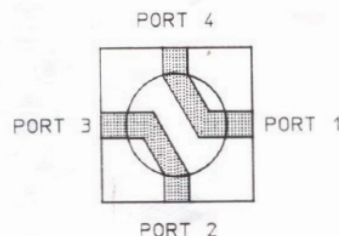
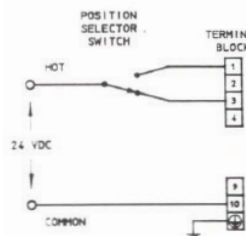
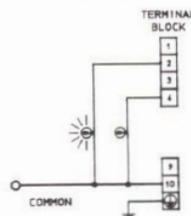
Control Signal Configuration



Resulting Valve Stem Position



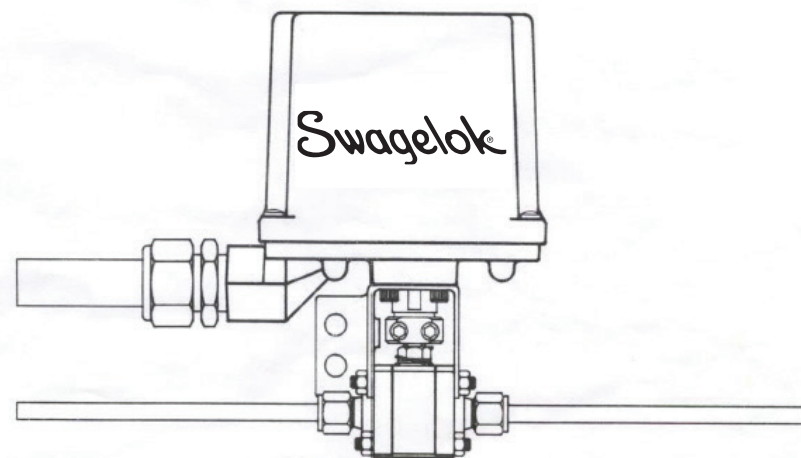
Resulting Lamp Status



Swagelok

141 Series Type DC Electric Ball  
Valve Actuators

## USER'S MANUAL



THIS MANUAL COVERS THE FOLLOWING MODEL:

**MS-141DC**

FOR USE ON 2-WAY AND 4-WAY BALL VALVES

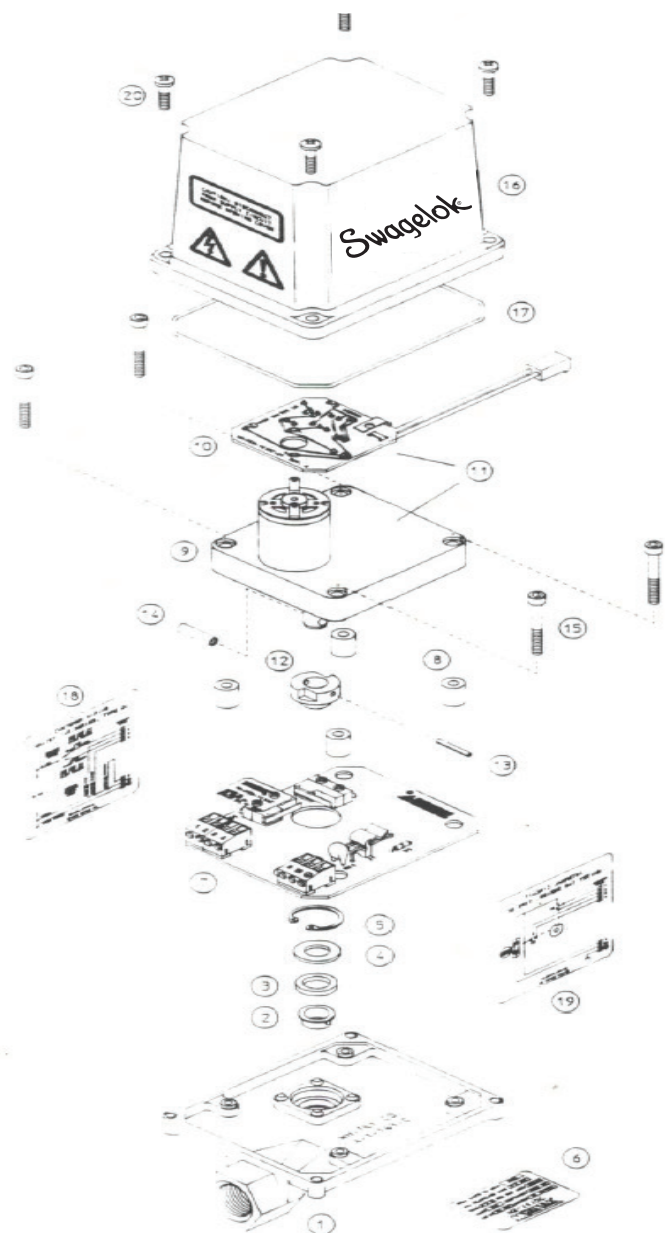
NOTE: Please read this user's manual completely and carefully before installing or operating related Swagelok electric ball valve actuators.

Swagelok — TM Swagelok Company  
© 1989-2019 Swagelok Company  
April 2019, RevE  
MS-INS-141DC

Swagelok Company  
Solon, OH 44139

# CONSTRUCTION INFORMATION

Exploded View of the 141 Series Type DC Actuator



141DC Series

# CONSTRUCTION INFORMATION

## Parts List and Materials of Construction

Item	Qty	Description	Material
1	1	Base	Die Cast Aluminum
2	1	Bushing	Nylon
3	1	Shaft Seal	Buna-N
4	1	Washer	Stainless Steel
5	1	Retaining Ring	Steel
6	1	Specification Label	Polyester
7	1	Assembled PC Board	
8	4	Motor Standoffs	Nickel Plated Brass
9	1	DC Gearmotor	Stainless Steel Shaft
10	1	Assembled PC Board	
11	1	Gearmotor Assembly	Stainless Steel Shaft
12	1	Dual Cam	Nylon
13	1	Spring Pin	Stainless Steel
14	1	Roll Pin	Stainless Steel
15	4	Mounting Screws	Cadmium Plated Steel
16	1	Cover	Die Cast Aluminum
17	1	Cover Seal	Buna-N
18	1	Wiring Label	Polyester
19	1	Schematic Label	Polyester
20	4	Cover Screws	Stainless Steel
	1	User's Manual	

## User Wiring and Internal Circuit

