

MOUNTING INSTRUCTIONS
FOR WESTLOCK LIMIT SWITCH
TO PNEUMATIC ACTUATORS

- Kit Contents:
- | | |
|--|--------------------|
| Hex Nut (4) | Instruction Sheet |
| Limit Switch | Mounting Studs (4) |
| Mounting Bracket | |
| Couplings (3 pcs. 1 per available Actuator size) | |

WARNING: Before servicing any installed valve, you must

- depressurize system
- cycle valve

WARNING: Residual material may be left in the valve and system.
NOTE: It is important to refer to the exploded view drawing while following the maintenance instructions.

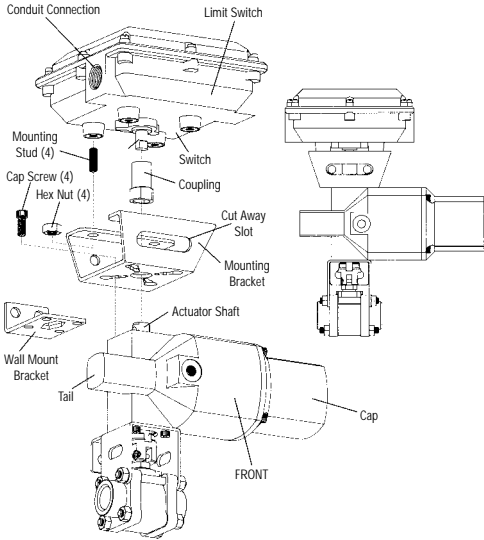
1. Remove the wall mount bracket from the actuator and set cap screws aside for later use. Discard wall mount bracket.
2. Position new mounting bracket over the actuator shaft with the "cutaway slot" positioned to the front of the actuator. Attach with the four (4) cap screws previously set aside.

Reference Torque:

- 131/151: 20-30 in•lbs. (2.3-3.4 N•m)
- 133/153: 30-40 in•lbs. (3.4-4.5 N•m)
- 135/155: 125-150 in•lbs. (14-17 N•m)

3. Select appropriate coupling from mounting kit (only one coupling will fit the actuator shaft) and place onto the actuator shaft aligning coupling flats and the flats on the actuator shaft. Discard the other two couplings.
4. Thread the (4) mounting studs into the underside of the limit switch. (Leave approximately 3/8" exposed.)
5. Place the limit switch onto the mounting bracket with the limit switch conduit connections running from the actuator tail to the actuator cap and positioned to the front of the actuator. Be sure

the limit switch shaft is properly aligned and inside the coupling. Attach the limit switch to the mounting bracket by threading the (4) hex nuts onto the mounting studs and tightening until snug.



Swagelok®
www.swagelok.com

MOUNTING INSTRUCTIONS
FOR WESTLOCK LIMIT
SWITCH/POSITION INDICATOR TO
PNEUMATIC ACTUATORS

- Kit Contents:
- | | |
|---|-------------------|
| Mounting Studs (4) | Instruction Sheet |
| Hex Nut (4) | |
| Button Head Cap Screws (4 included in the Limit Switch/
Position Indicator Assembly) | |
| Limit Switch/Position Indicator Assembly | |
| Mounting Bracket | |
| Couplings (3 pcs. 1 per available Actuator size) | |

WARNING: Before servicing any installed valve, you must

- depressurize system
- cycle valve

WARNING: Residual material may be left in the valve and system.
NOTE: It is important to refer to the exploded view drawing while following the maintenance instructions.

1. Remove the wall mount bracket from the actuator and set cap screws aside for later use. Discard wall mount bracket.
2. Position new mounting bracket over the actuator shaft with the "cutaway slot" positioned to the front of the actuator. Attach with the four (4) cap screws previously set aside.

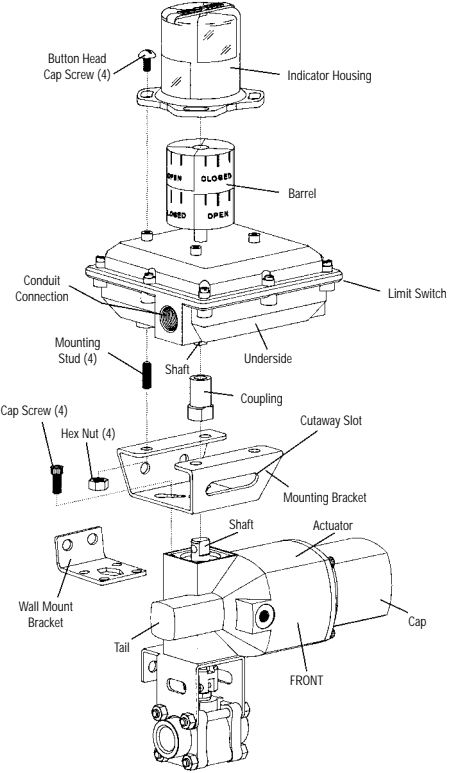
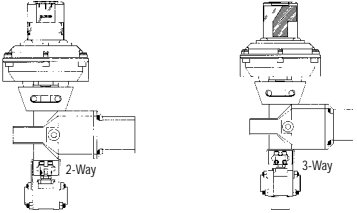
Reference Torque:

- 131/151: 20-30 in•lbs. (2.3-3.4 N•m)
- 133/153: 30-40 in•lbs. (3.4-4.5 N•m)
- 135/155: 125-150 in•lbs. (14-17 N•m)

3. Select appropriate coupling from mounting kit (only one coupling will fit the actuator shaft) and place onto the actuator shaft aligning the coupling flats and the flats on the actuator shaft. Discard the other two couplings.
4. Thread the (4) mounting studs into the underside of the limit switch/ position indicator assembly. (Leave approximately 3/8" exposed.)

MS-INS-WLLS-PI
CP Revision C
August, 1999

5. Place the limit/switch position indicator assembly onto the mounting bracket with the limit switch conduit connections running from the actuator tail to the actuator cap and positioned to the front of the actuator. Be sure the limit switch shaft is properly aligned and inside the coupling. Attach the limit switch to the mounting bracket by threading the (4) hex nuts onto the mounting studs and tighten until snug. Depending on assembly type (2- or 3-way) proceed to step 6a or 6b.
- 6a. **2-Way Assemblies** - Check to make sure position indicator reading is in accordance with the valve position. If not, remove the four (4) button head cap screws attaching the indicator housing to the limit switch. Lift the indicator housing and turn (90°) until the correct valve position is showing through the indicator housing windows. Once the position indicator is correct, reattach to the limit switch using the same (4) button head cap screws previously removed. Finger tighten the cap screws.
- 6b. **3-Way Assemblies** - Check to make sure the flow path indicator reading on the position indicator is in accordance with the valve flow direction. If not, remove (4) button head cap screws attaching the indicator housing to the limit switch. Remove the indicator housing. Lift and rotate the barrel (90°). Replace the barrel and indicator housing. Check to see if flow reading is in accordance with the valve flow. If not, repeat above procedure until flow indication is correct. Reattach the indicator housing to the limit switch using the same (4) button head cap screws removed previously. Finger tighten the cap screws.



MOUNTING INSTRUCTIONS FOR WESTLOCK POSITION INDICATOR TO PNEUMATIC ACTUATORS

Kit Contents:

- Position Indicator/Cube Assembly/Adapter
- Button Head Cap Screws (4)
- Hex Nut (4)
- Mounting Bracket
- Couplings (3 pcs. 1 per available Actuator size)
- Instruction Sheet

WARNING: Before servicing any installed valve, you must

- depressurize system
- cycle valve

WARNING: Residual material may be left in the valve and system.
NOTE: It is important to refer to the exploded view drawing while following the maintenance instructions.

1. Remove the wall mount bracket from the actuator and set cap screws aside for later use. Discard the wall mount bracket.
2. Position new mounting bracket over the actuator shaft with the "cutaway slot" positioned to the front of the actuator. Attach with the four (4) cap screws previously set aside.

Reference Torque:

- 131/151: 20-30 in•lbs. (2.3-3.4 N•m)
- 133/153: 30-40 in•lbs. (3.4-4.5 N•m)
- 135/155: 125-150 in•lbs. (14-17 N•m)

3. Select appropriate coupling from mounting kit (only one coupling will fit the actuator shaft) and place onto the actuator shaft aligning the coupling flats with the flats on the actuator shaft. Discard the other two couplings.

- 4a. **2-Way Assemblies** - Remove cube from inside position indicator and reposition so that the shaft hole is located down, towards

the actuator with open sides of the cube positioned toward the "closed" callout on the bottom row of the position indicator.
NOTE: DO NOT PRESS cube into the position indicator. Bottom of cube should be approximately 1/8" - 1/4" below cube slot.

- 4b. **3-Way Assemblies** - Skip to step #5.
5. Place the adapter "shaft" into the coupling as shown in drawing.
6. Set the position indicator onto the adapter. (Cube should **not** touch the mounting bracket. If it does, return to step #4 and repeat. Internal components of position indicator should move freely without obstruction.) Depending on assembly type (2- or 3-way) proceed to step 7a or 7b.
- 7a. **2-Way Assemblies** - With the position indicator attached to the adapter, turn the indicator housing 90° until the correct position of the valve shows through the indicator windows.
- 7b. **3-Way Assemblies** - Check to be sure position indicator shows correct valve "flow direction". If not, remove the indicator housing. Lift and rotate the barrel (90°). Replace the barrel and indicator housing. Check to see if flow reading is in accordance with the valve flow. If not, repeat above procedure until flow indication is correct.
8. Attach the position indicator with the four (4) button head cap screws through the top of the position indicator and the mounting bracket. Thread the four (4) hex nuts onto the button head cap screws and tighten until snug.

Swagelok
www.swagelok.com

